

Clubs and Sports Centers

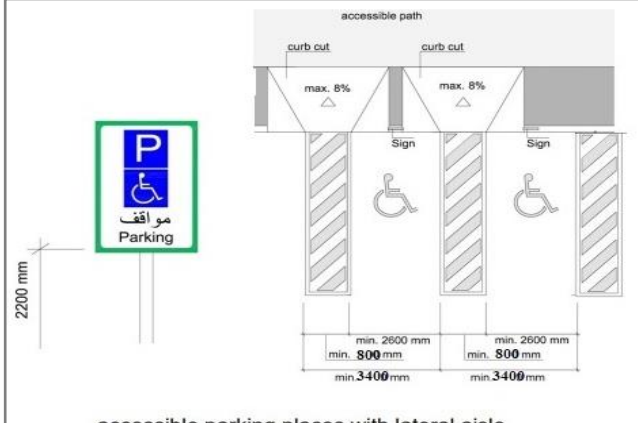

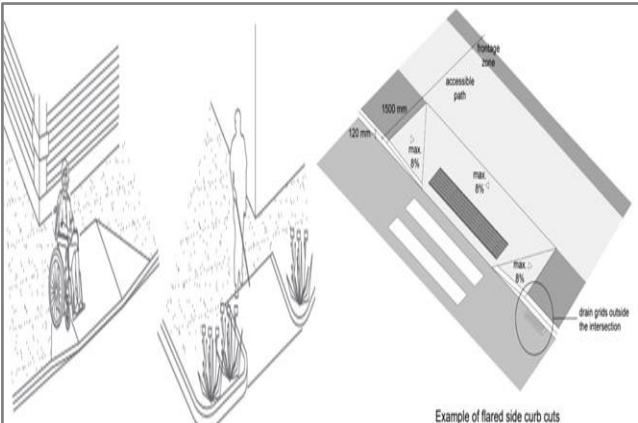

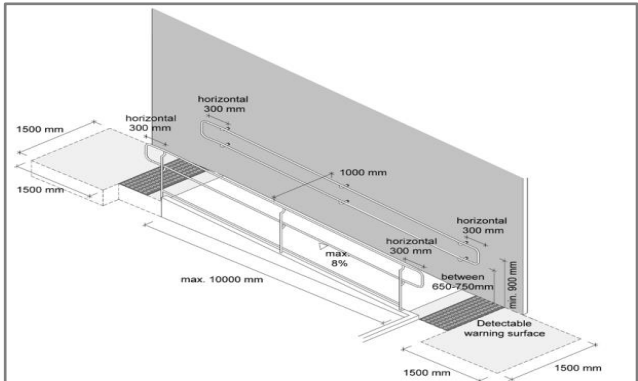

The World Disability Union (WDU) was established in 2011 as an inclusive umbrella organization for 400 sub-organizations from 91 countries with the status of International Qualified Entities. Within the scope of the Convention on the Rights of Persons with Disabilities guaranteed by countries; Disability prevention; Overcoming the disability; within the framework of the WDU Implementation Projects it developed for the inclusion of people with disabilities into the society, it aims at sustainable corporate work and unity with all relevant and competent parties.

We are the only institution that grants international certificates to places that are environmentally qualified for people with disabilities, whether governmental or private (airports, hotels, transportation, parks, museums, malls....)

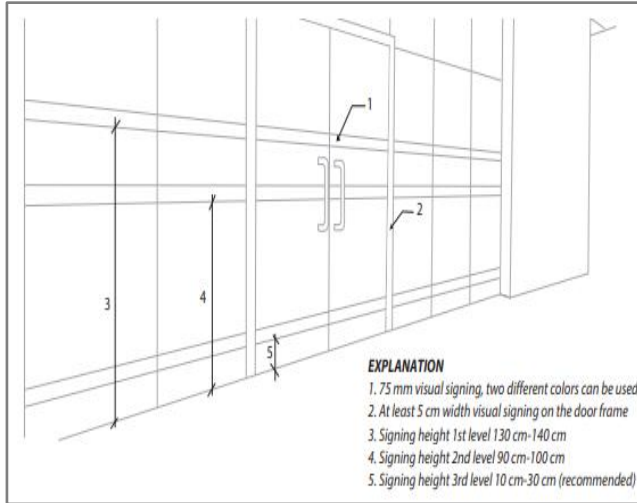
The certificate of the WORLD DISABILITY UNION for the places eligible for people with disabilities in its three sections is an official recognition that this place is friendly for people with disabilities **In line with Article 9 of the U N Convention.**

The World disability union continues to evaluate many places eligible for people with disabilities in all countries, around the world, as the committees are working to follow up the audit.

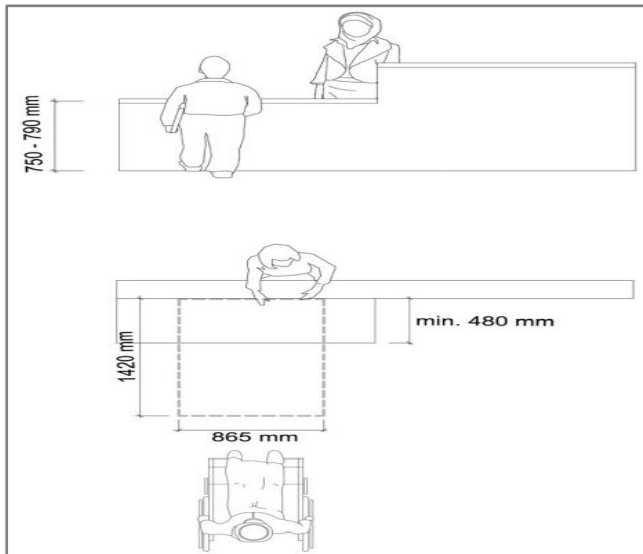
Clubs and Sports Centers

No.	Conditions & Designs	Images
1.	<p>Car Parking</p>  <p style="text-align: center;">accessible parking places with lateral aisle</p>	
2.	<p>Car Parking Ramp</p>  <p style="text-align: center;">Example of flared side curb cuts</p>	
3.	<p>Entrance Ramp</p>  <p style="text-align: center;">Maximum rise and length for ramps with details of handrails required and different alternatives for handrail ends</p>	

4. Main Entrance



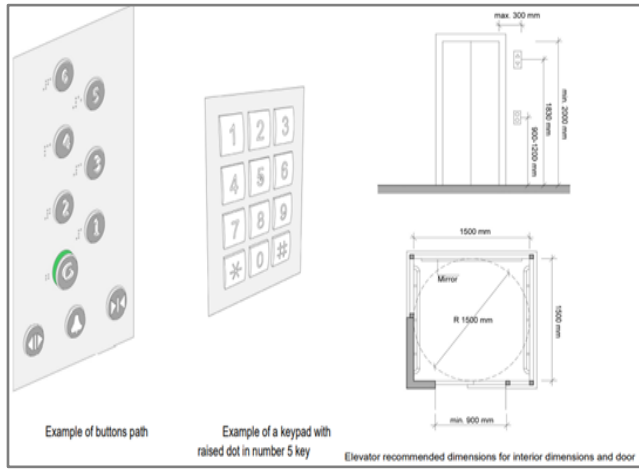
5. Reception with availability of wheelchair



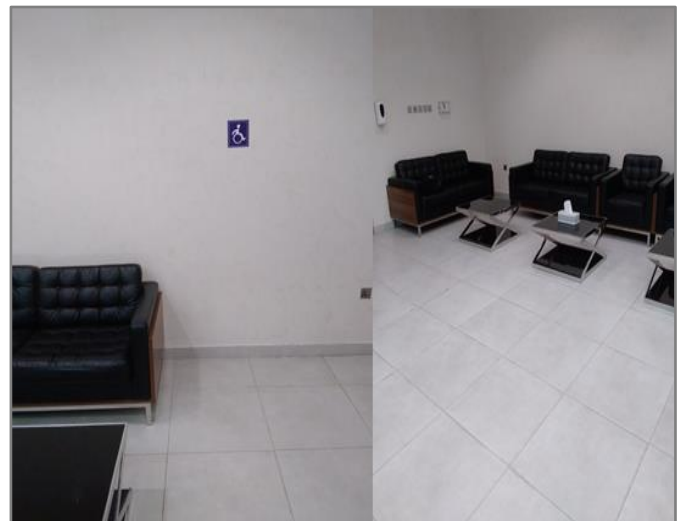
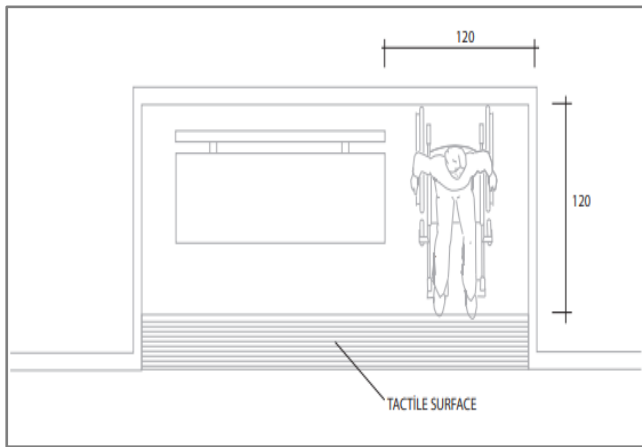
6. Corridors



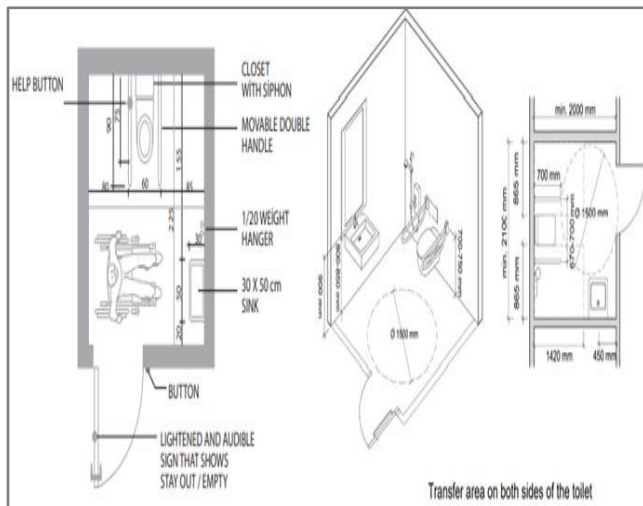
7. Elevator accessible for disabilities



8. Waiting Area



9. Bathrooms



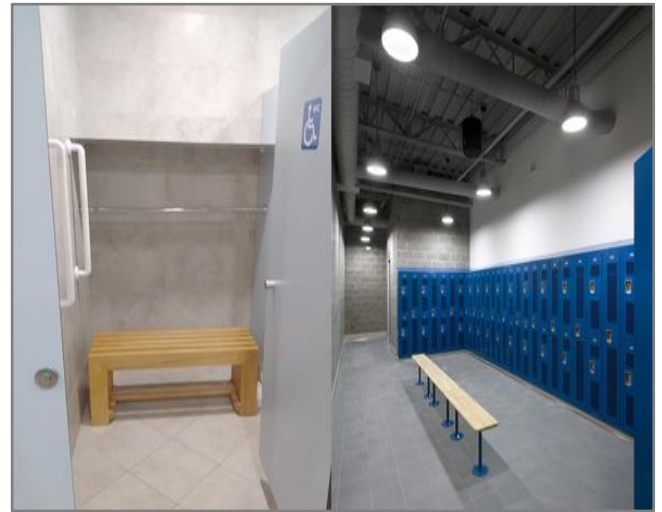
10. Physiotherapy Room



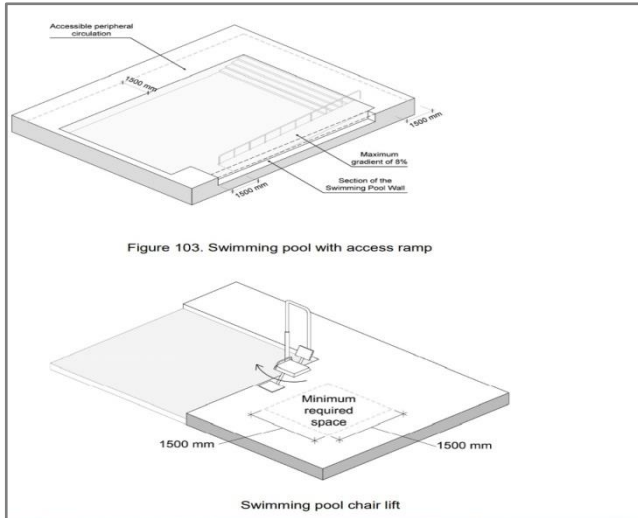
11. GYM



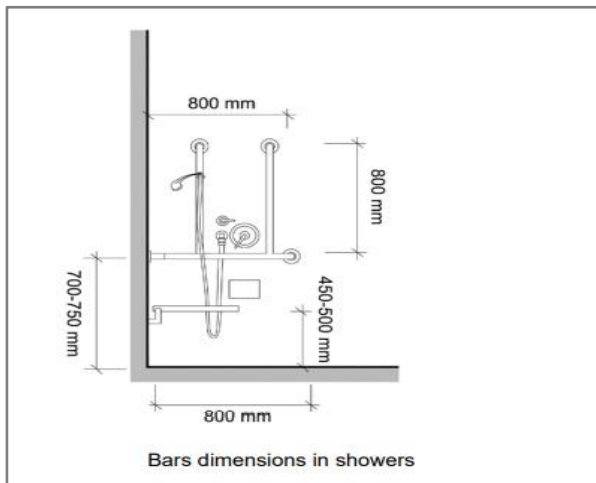
12. Dressing rooms



13. Swimming Pool



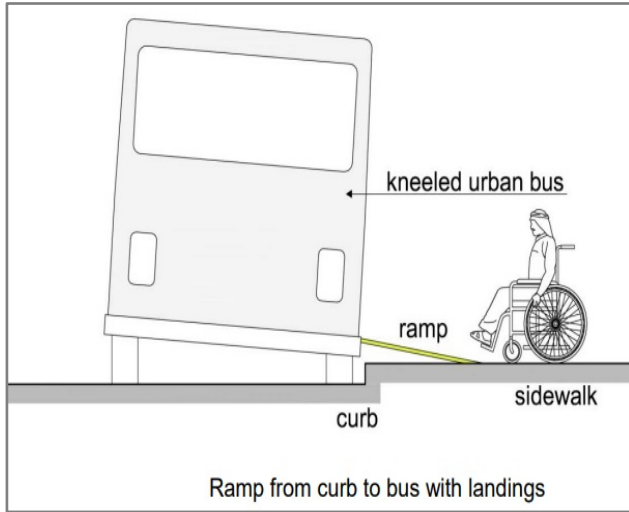
14. Shower Rooms



15. places for disabilities in the stands



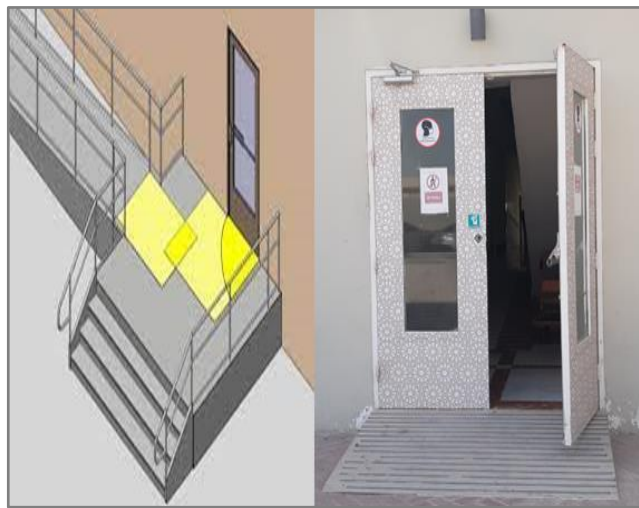
16. Buses accessible for disabilities



17. Prayer Room



18. Emergency Exit with ramp



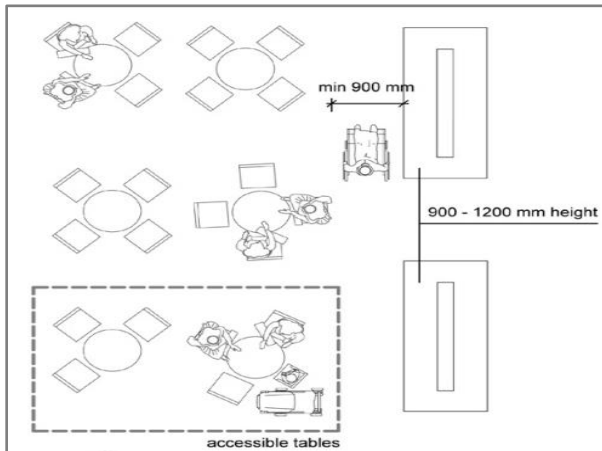
19. Fire Extinguisher



Alarm Bell (sound & light)



20. The Cafeteria



List of Standards for Clubs and Sports Centers

No.	Degree <hr style="width: 50%; margin: 0 auto;"/> Standards	1	2	3	4	5
1.	Car parking 10% (maximum 8 parking)					
2.	Parking ramps are 1m high by 10m long					
3.	Main entrance ramp is 1m high by 10m long					
4.	Main entrance with a width of more than 120cm					
5.	The height of the reception desks is maximum of 100cm, with the availability of sign language & wheelchair					
6.	Corridor with a width of at least 170cm for a length of more than 10m & a width of at least 100cm for a length of less than 10m					
7.	Waiting area for people with disabilities with a poster stating that it is for the disabled					
8.	<p><u>Elevator accessible for disabilities:</u></p> <ul style="list-style-type: none"> • Door width: not less than 100 cm • The internal space of the elevator: 180cm square • Time period for opening and closing the door: not less than 10 seconds • Button height: No more than 140cm • Barriers on two sides of the elevator minimum • Voice & Braille 					
9.	Physiotherapy Room					
10.	GYM					
11.	Dressing Rooms					
12.	Swimming pools (availability of assistive devices and persons eligible to deal with people with disabilities)					
13.	Shower rooms					

14.	The availability of places for persons with disabilities in the stands					
15.	Buses accessible for disabilities with ramp					
16.	The prayer room					
17.	The Cafeteria					
18.	Staff culture in dealing with people with disabilities (attending special courses dealing with people with disabilities + sign language courses)					
19.	Bathrooms are equipped for people with <u>disabilities</u> : <ul style="list-style-type: none"> • Width of the door: at least 100cm • The door opens out & closing automatically • Indoor bathroom space: not less than 150cm x 180cm • Sink height: 80 cm • Sink auxiliary devices height: 80cm – 85cm • Seat height: 40cm – 45cm • Seat auxiliary devices height: 60cm – 65cm • Auxiliary Equipment Dimension: Provide 35cm distance on both sides of the toilet chair from the middle of the chair • Clothes Hanger: 120cm – 130cm • Alarm bell (sound & light) 					
20.	Emergency Exit with ramp from outside					
21.	Fire Extinguisher, Alarm Bell (sound & light)					

* Total Point:

* The Ratio is calculated as follows: Total Point / Number of standards x 5 x 100

* The Ratio: