



The World Disability Union (WDU) was established in 2011 as an inclusive umbrella organization for 400 sub-organizations from 91 countries with the status of International Qualified Entities. Within the scope of the Convention on the Rights of Persons with Disabilities guaranteed by countries; Disability prevention; Overcoming the disability; within the framework of the WDU Implementation Projects it developed for the inclusion of people with disabilities into the society, it aims at sustainable corporate work and unity with all relevant and competent parties.

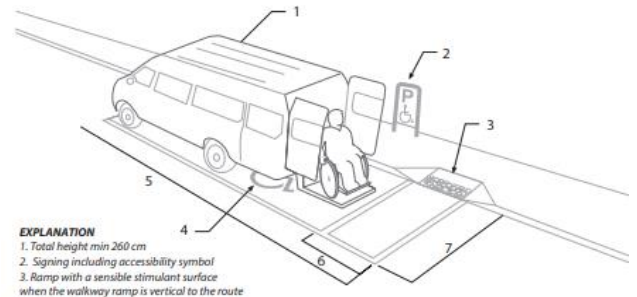

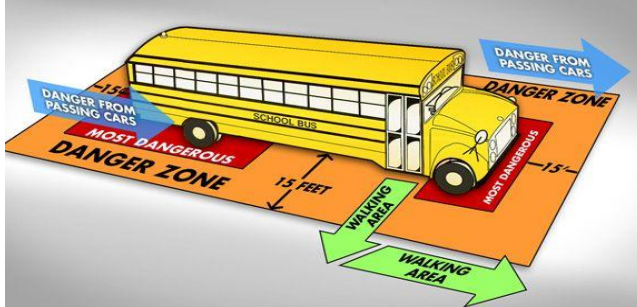

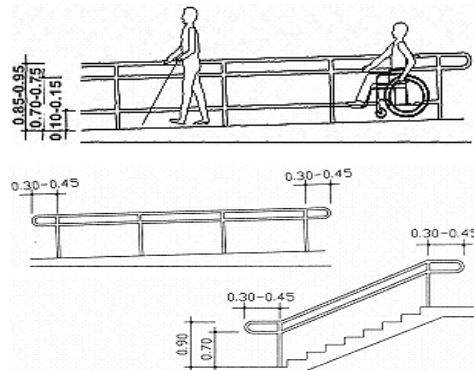

We are the only institution that grants international certificates to places that are environmentally qualified for people with disabilities, whether governmental or private (airports, hotels, transportation, parks, museums, malls....)

The certificate of the WORLD DISABILITY UNION for the places eligible for people with disabilities in its three sections is an official recognition that this place is friendly for people with disabilities **In line with Article 9 of the U N Convention.**

The World disability union continues to evaluate many places eligible for people with disabilities in all countries, around the world, as the committees are working to follow up the audit.

Educational Institutions

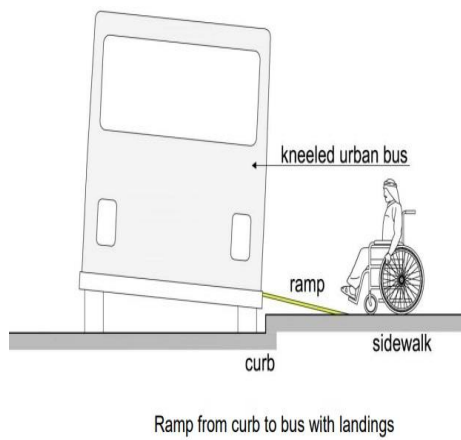
Kindergarten

| No. | Conditions | design or photo |
|-----|--|--|
| 1. | <p>Bus stops in a safe manner</p>  <p>EXPLANATION</p> <ol style="list-style-type: none"> 1. Total height min 260 cm 2. Signing including accessibility symbol 3. Ramp with a sensible stimulant surface when the walkway ramp is vertical to the route 4. Accessibility symbol 5. 900 cm 6. 120 cm 7. 250 cm |  |
| 2. | <p>The availability of escorts on buses</p>  |  |
| 3. | <p>The availability of slopes</p>  |  |

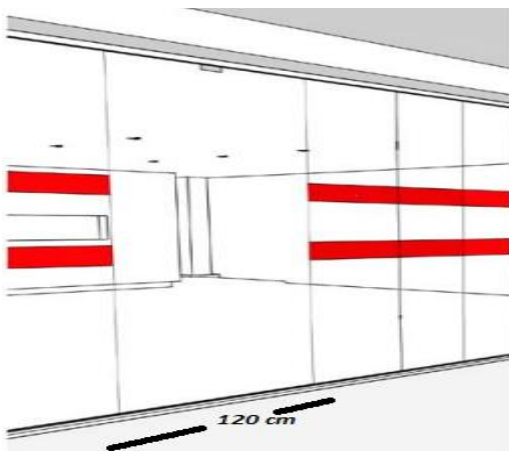
4. The reception
(should be of an appropriate height for persons with disabilities or part of it)



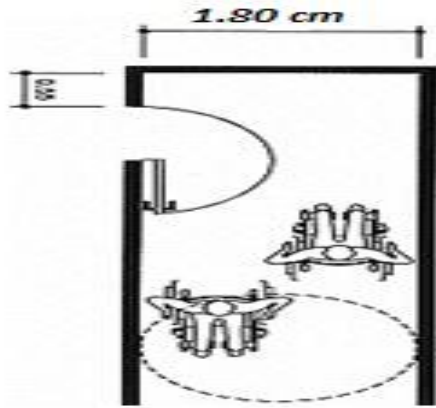
5. Buses are eligible for boarding passes



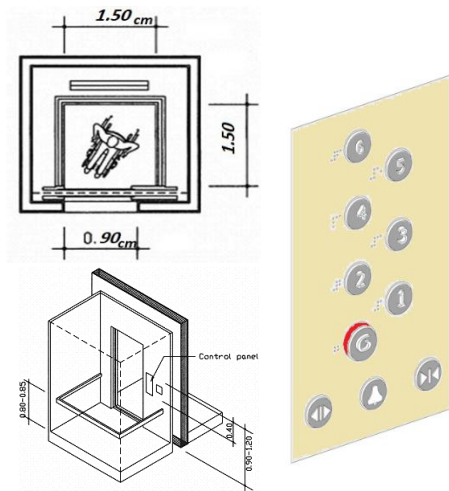
6. Entrances



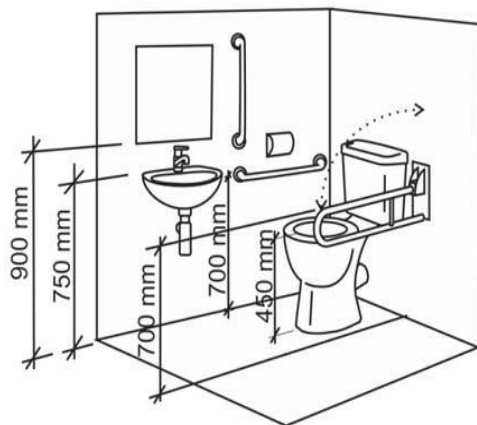
7. Corridors



8. The Elevator (if there are 2 floors)



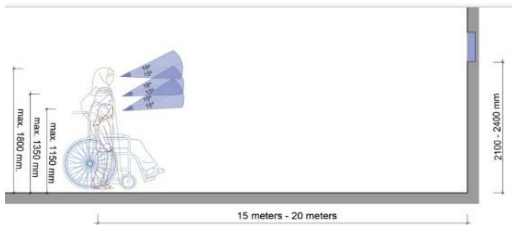
9. Bathrooms



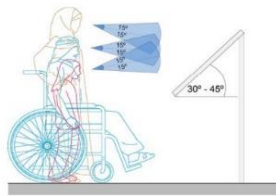
10 Staff culture in dealing with persons with disabilities



11.. Braille Signboards



Vertical visual reach - far distance



Inclined sign and tactile maps



12. Student numbers in classes
The number should be appropriate for the size of the class so that a person with a disability can move appropriately.



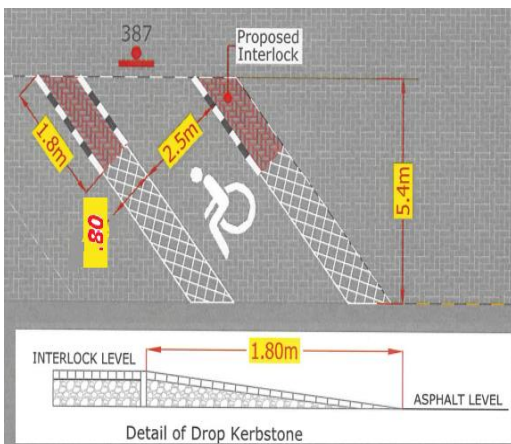
13. Existing games (safety conditions)
There should be an appropriate number of games that people with disabilities can use



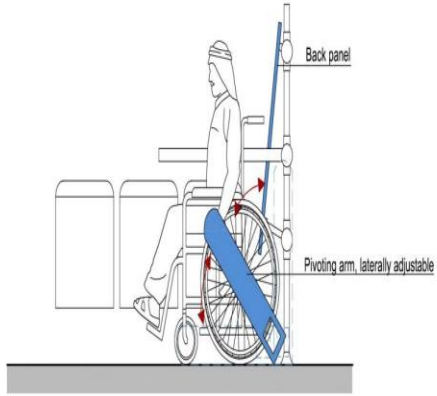
14. Student activities (extent of participation of the disabled)
All students should participate in class activities, especially people with disabilities



15. Disabled parking (parents may have disabilities)



16. Auxiliary devices inside buses



Rear-facing securement with pivoting aisle arm - securement technology for low g transportation in buses and rail



17. Classroom

The number should be appropriate for the size of the class so that a person with a disability can move appropriately.



List of Standards for Educational Institutions
Kindergarten

| No. | Degree _____ | 1 | 2 | 3 | 4 | 5 |
|-----|--|---|---|---|---|---|
| | Standards | | | | | |
| 1. | Bus stops in a safe manner | | | | | |
| 2. | Parking for the disabled (parents) by 10% (maximum 8 parking) | | | | | |
| 3. | Bus escorts familiar with dealing with people with disabilities (Attending special courses for dealing with people with disabilities + sign language courses) | | | | | |
| 4. | The slopes are 1m high by 10m long | | | | | |
| 5. | Buses are eligible for boarding the disabled by providing wheelchair lift elevator | | | | | |
| 6. | Entrances with a width of more than 120cm | | | | | |
| 7. | The reception should be of an appropriate height for persons with disabilities or part of it | | | | | |
| 8. | Braille signboards | | | | | |
| 9. | Corridor with a width of at least 180cm for a length of more than 10m & a width of at least 100cm for a length of less than 10m | | | | | |
| 10. | <u>The Elevator</u> <ul style="list-style-type: none"> • Door width: not less than 100 cm • The internal space of the elevator: 180cm square • Time period for opening and closing the door: not less than 10 seconds • Button height: No more than 140cm • Voice & Braille | | | | | |

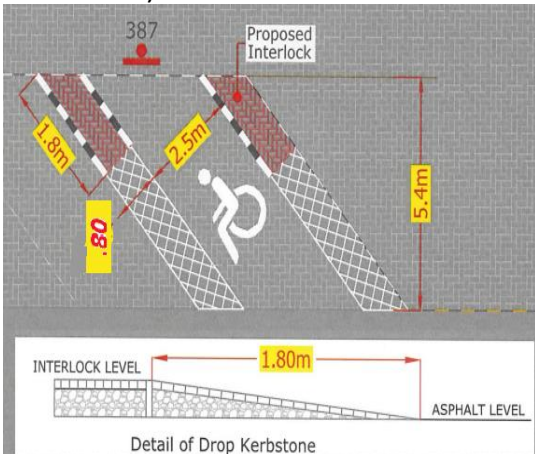

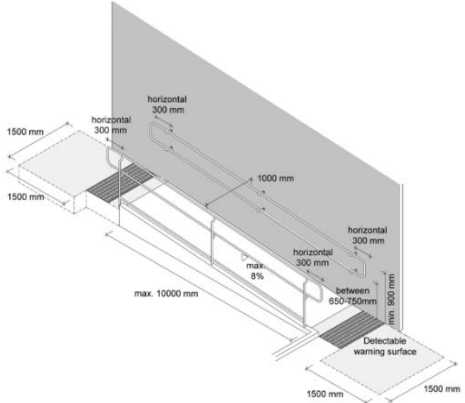

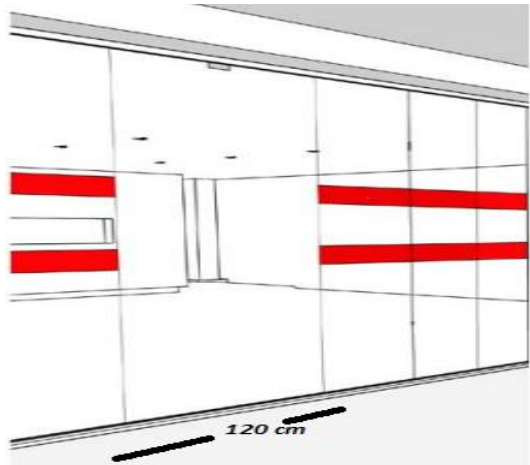

| | | | | | | |
|-----|---|--|--|--|--|--|
| 11. | Bathrooms are equipped for people with <u>disabilities</u> <ul style="list-style-type: none"> • Width of the door: at least 100cm • The door opens out • Indoor bathroom space: not less than 150cm x 180cm • Sink height: 80 cm • Height of toilet seat: 40cm – 45cm • Height of the auxiliary devices: 60cm – 65cm • Auxiliary Equipment Dimension: Provide 35cm distance on both sides of the toilet chair from the middle of the chair | | | | | |
| 12. | Supervisors culture of dealing with people with disabilities (attending courses dealing with people with disabilities + sign language courses) | | | | | |
| 13. | The existing games are suitable for use by people with disabilities | | | | | |
| 14. | The classroom is suitable for wheelchair movement | | | | | |
| 15. | Student numbers in classes | | | | | |
| 16. | Student activities | | | | | |
| 17. | Auxiliary devices inside buses | | | | | |

* Total Point:

* The Ratio calculated as follows: $(\text{Total Point} / \text{Number of standards} \times 5) \times 100$

* The Ratio:

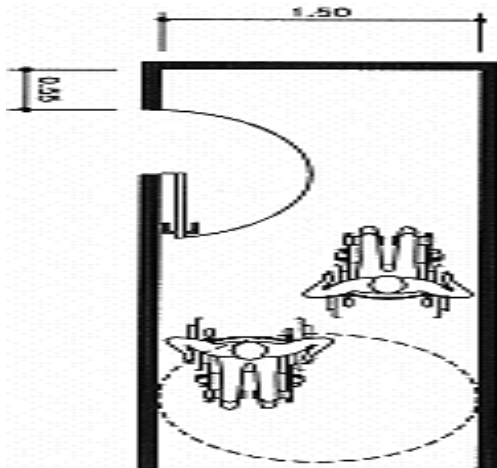
Schools

| No. | Conditions | design or photo |
|-----|---|--|
| 1 | <p>Disabled parking (parents may have disabilities)</p>  <p>Detail of Drop Kerbstone</p> |  |
| 2 | <p>Slopes</p>  <p>Maximum rise and length for ramps with details of handrails required and different alternatives for handrail ends</p> |  |
| 3 | <p>Entrances</p>  <p>120 cm</p> |  |

4. The reception (should be of an appropriate height for persons with disabilities or part of it)

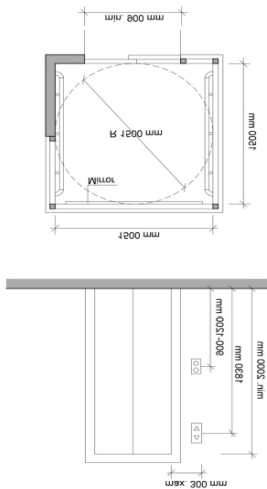


5. Corridors

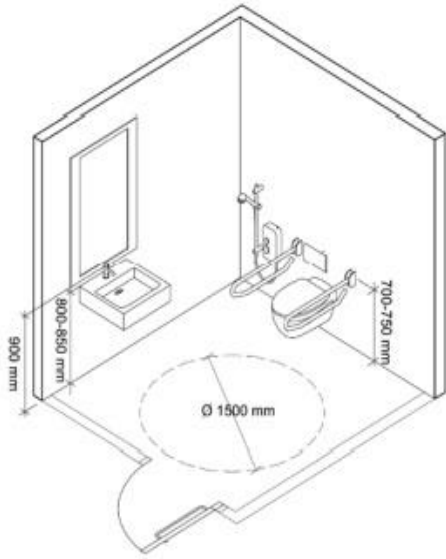


6. The Elevator (if there are two floors)

Elevator recommended dimensions for interior and door



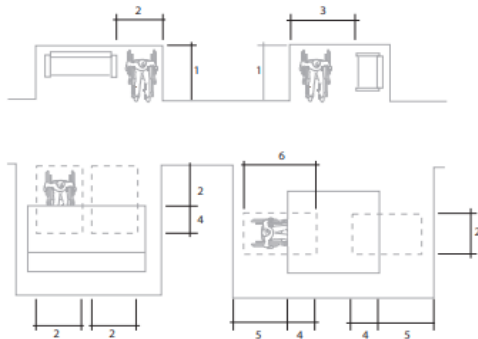
7. Bathrooms



8. The Prayer Room



9. External squares

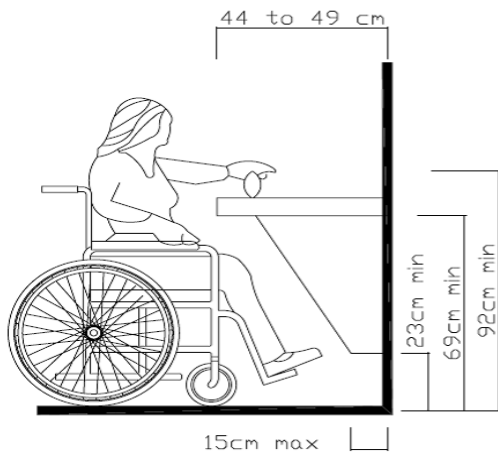


Explanation

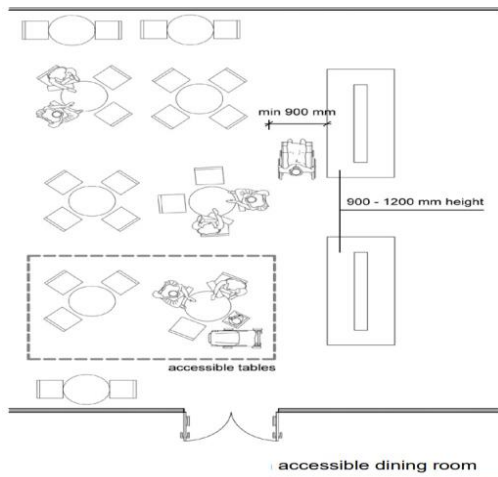
- 1- 122 cm
- 2- 76 cm
- 3- 105 cm
- 4- 79 cm
- 5- 90 cm
- 6- 122 cm



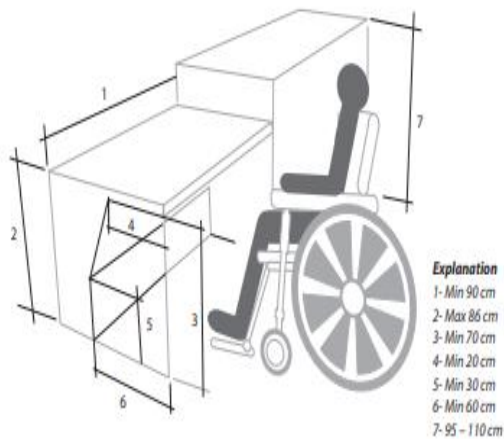
10. Water refrigerators



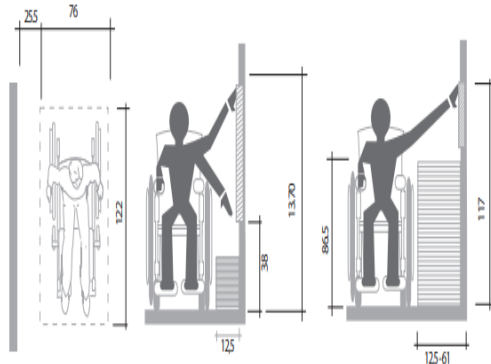
11. The Cafeteria



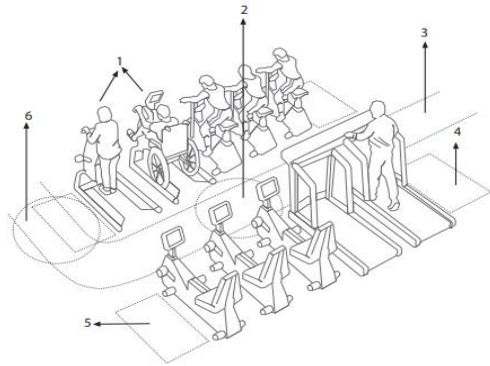
12. Laboratories



13. The Library



14. Gym



Explanation
 1- Some of the sports equipment should be used both seating and standing.
 2- A maneuver area with a 150 cm radius should be left between the equipments to provide users to maneuver not to go to the end of the gap between the equipment.
 3- There should be accessible routes between all lines of the sport equipment.
 4- An area should be left to use for leaving the walkers etc. kind of devices when using the sports equipment.
 5- An area as min. 80 cm x 122 cm size should be left, for individuals who use movement aid device, at the end of the sport equipment lines for the transfer to both of the equipment.
 6- To provide easy getting on/off the equipment for some individuals, a maneuver area with 150 cm radius should be left.

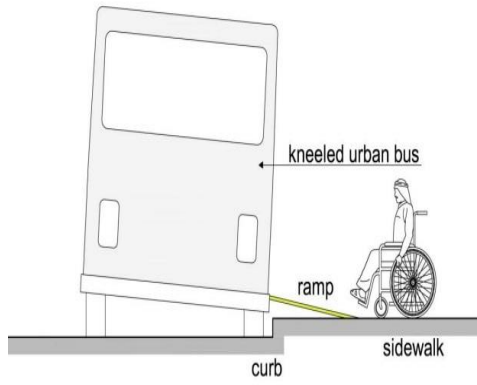
Image 203 - Location of condition sport equipment in fitness centers (TS 91 11)



15. Student activities
 All students should participate in class activities, especially people with disabilities



16 Buses are eligible for boarding passes



Ramp from curb to bus with landings



17 Volunteering (in the field of activities & events for people with disabilities)



18 Culture of teachers to deal with people with disabilities



List of Standards for Educational Institutions Schools

| No. | Degree <hr/> Standards | 1 | 2 | 3 | 4 | 5 |
|-----|---|---|---|---|---|---|
| 1. | Parking for the disabled (parents) by 10% (maximum 8 parking) | | | | | |
| 2. | The slopes are 1m high by 10m long | | | | | |
| 3. | The reception should be of an appropriate height for persons with disabilities or part of it | | | | | |
| 4. | Corridor with a width of at least 170cm for a length of more than 10m & a width of at least 100cm for a length of less than 10m | | | | | |
| 5. | <u>The Elevator</u> <ul style="list-style-type: none"> • Door width: not less than 100 cm • The internal space of the elevator: 180cm square • Time period for opening and closing the door: not less than 10 seconds • Button height: No more than 140cm • Voice & Braille | | | | | |
| 6. | <u>Bathrooms are equipped for people with disabilities</u> <ul style="list-style-type: none"> • Width of the door: at least 100cm • The door opens out • Indoor bathroom space: not less than 150cm x 180cm • Sink height: 80 cm • Height of toilet seat: 40cm – 45cm • Height of the auxiliary devices: 60cm – 65cm • Auxiliary Equipment Dimension: Provide 35cm distance on both sides of the toilet chair from the middle of the chair | | | | | |

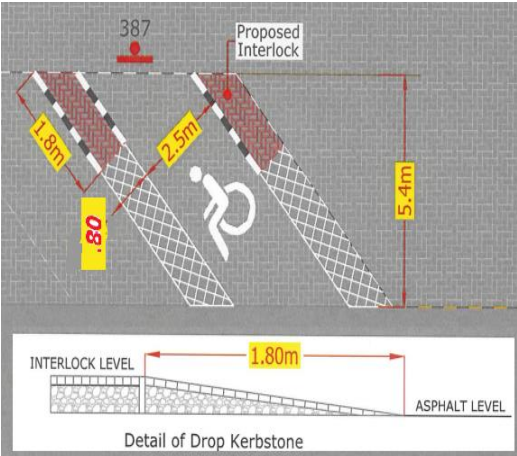

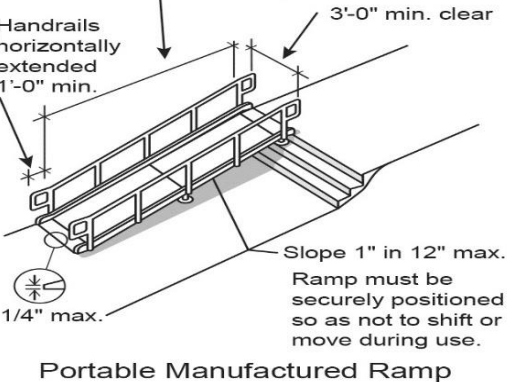

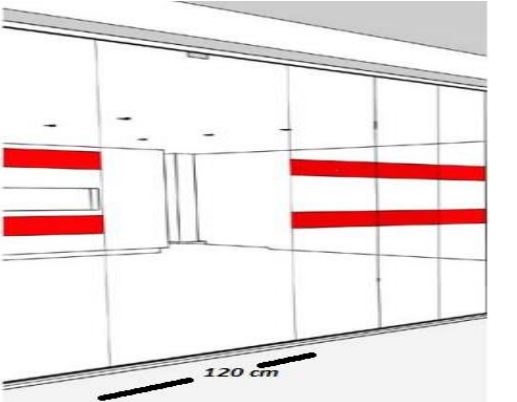

| | | | | | | |
|-----|---|--|--|--|--|--|
| 7. | Entrances with a width of more than 120cm | | | | | |
| 8. | The prayer room | | | | | |
| 9. | The outdoor squares are equipped with | | | | | |
| 10. | Water refrigerators | | | | | |
| 11. | The Cafeteria | | | | | |
| 12. | Laboratories | | | | | |
| 13. | The library has spaces for wheelchair movement & provides books & stories in Braille | | | | | |
| 14. | Gym | | | | | |
| 15. | Student activities | | | | | |
| 16. | Buses are eligible for boarding the disabled by providing wheelchair lift elevator | | | | | |
| 17. | Braille signboards | | | | | |
| 18. | Volunteering (in the field of activities & events for people with disabilities) | | | | | |
| 19. | Culture of teachers dealing with people with disabilities (attending special courses dealing with people with disabilities + sign language courses) | | | | | |

* Total Point:

* The Ratio calculated as follows: $(\text{Total Point} / \text{Number of standards} \times 5) \times 100$

* The Ratio:

Universities

| No. | Conditions | design or photo |
|-----|--|--|
| 1 | <p>Car parking</p>  <p>Detail of Drop Kerbstone</p> |  |
| 2 | <p>Slopes</p> <p>Max. 30" of rise without intermediate landing.</p> <p>Handrails horizontally extended 1'-0" min.</p> <p>3'-0" min. clear</p> <p>Slope 1" in 12" max.</p> <p>Ramp must be securely positioned so as not to shift or move during use.</p> <p>Portable Manufactured Ramp</p>  |  |
| 3 | <p>Entrances</p>  <p>120 cm</p> |  |

4. The reception
(should be of an appropriate height for persons with disabilities or part of it)



5. Corridors

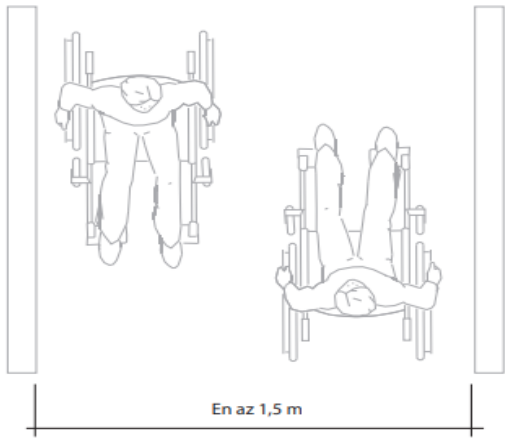
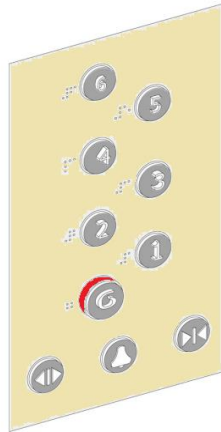


Image 93. Min net width for 2 wheelchairs passage



6. Elevators high buttons, voice, braille

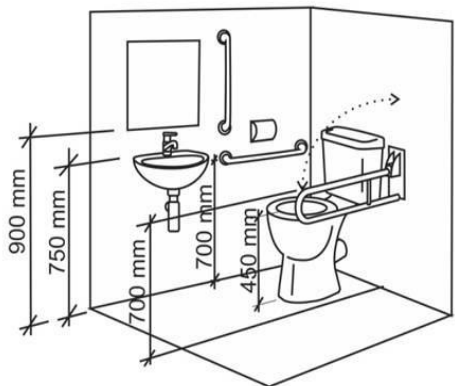


7. Classroom (the availability of a sign language interpreter in the lecture if there is a deaf)



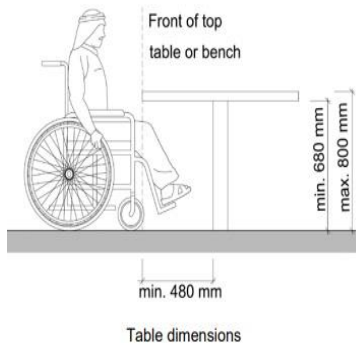
8

Bathrooms



9

Computer rooms & laboratories are equipped



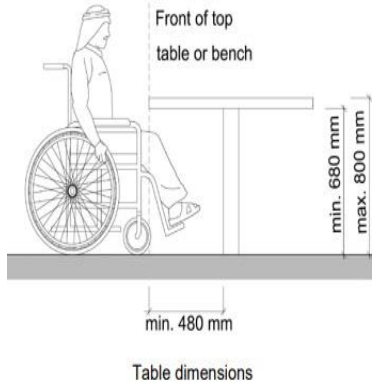
10

Medical Clinic



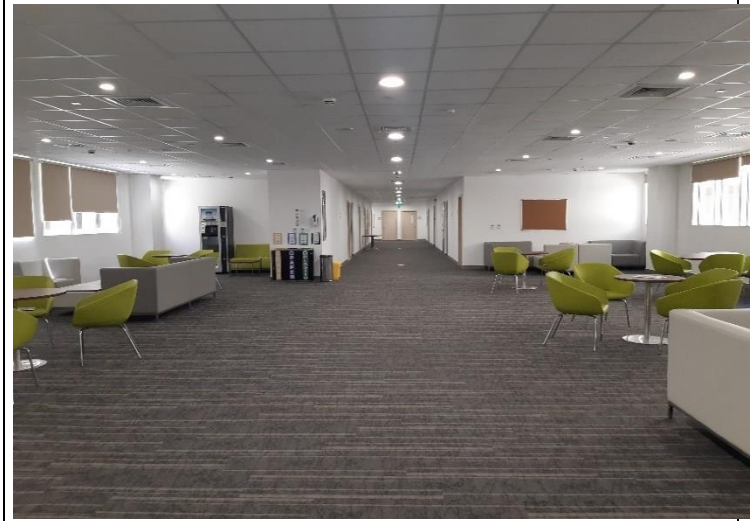
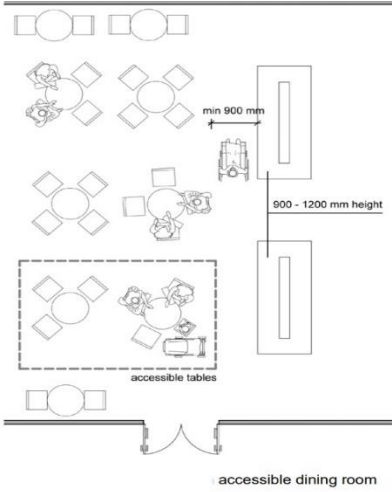
11

The Library



12

Rest places

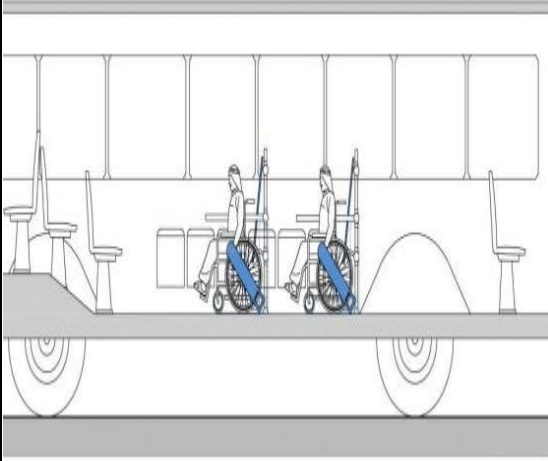


13

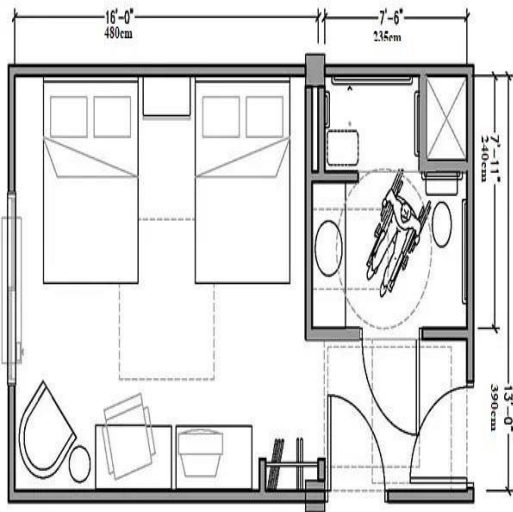
The Prayer Room Place of ablution



14 Buses (eligible)



15 University housing

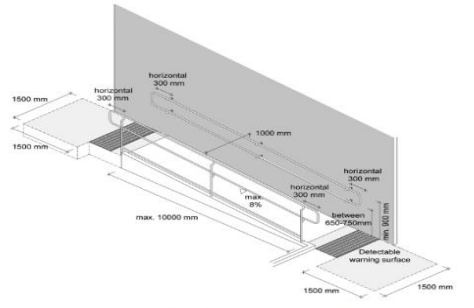


16 Service buildings



17

Stadiums & Gyms



Maximum rise and length for ramps with details of handrails required and different alternatives for handrail ends



18

Student activities



List of Standards for Educational Institutions Universities

| No. | Degree Standards | 1 | 2 | 3 | 4 | 5 |
|-----|--|---|---|---|---|---|
| 1. | Parking for the disabled (parents) by 10% (maximum 8 parking) | | | | | |
| 2. | The slopes are 1m high by 10m long | | | | | |
| 3. | Entrances with a width of more than 120cm | | | | | |
| 4. | The reception should be of an appropriate height for persons with disabilities or part of it | | | | | |
| 5. | Corridor with a width of at least 170cm for a length of more than 10m & a width of at least 100cm for a length of less than 10m | | | | | |
| 6. | <u>The Elevator</u> <ul style="list-style-type: none"> • Door width: not less than 100 cm • The internal space of the elevator: 180cm square • Time period for opening and closing the door: not less than 10 seconds • Button height: No more than 140cm • Voice & Braille | | | | | |
| 7. | Classroom (the availability of a sign language interpreter in the lecture if there is a deaf) | | | | | |
| 8. | Computer rooms & laboratories are equipped with a space suitable for wheelchairs | | | | | |
| 9. | The library has spaces for wheelchair movement & provides books & stories in Braille | | | | | |

| | | | | | | |
|-----|---|--|--|--|--|--|
| 10. | Bathrooms are equipped for people with <u>disabilities</u> <ul style="list-style-type: none"> • Width of the door: at least 100cm • The door opens out • Indoor bathroom space: not less than 150cm x 180cm • Sink height: 80 cm • Height of toilet seat: 40cm – 45cm • Height of the auxiliary devices: 60cm – 65cm • Auxiliary Equipment Dimension: Provide 35cm distance on both sides of the toilet chair from the middle of the chair | | | | | |
| 11. | Medical clinic | | | | | |
| 12. | Rest places | | | | | |
| 13. | The prayer room | | | | | |
| 15. | Buses are eligible for boarding the disabled by providing wheelchair lift elevator | | | | | |
| 16. | University housing | | | | | |
| 17. | Service buildings | | | | | |
| 18. | Stadiums & Gyms | | | | | |
| 19. | Student activities | | | | | |

* Total Point:

* The Ratio calculated as follows: $(\text{Total Point} / \text{Number of standards} \times 5) \times 100$

* The Ratio: