

Public Parks & Entertainment

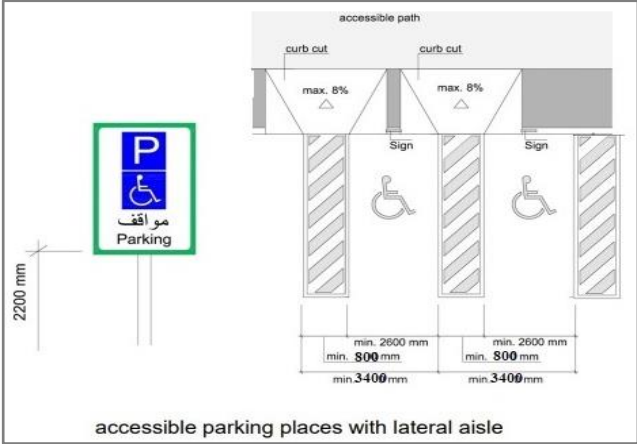

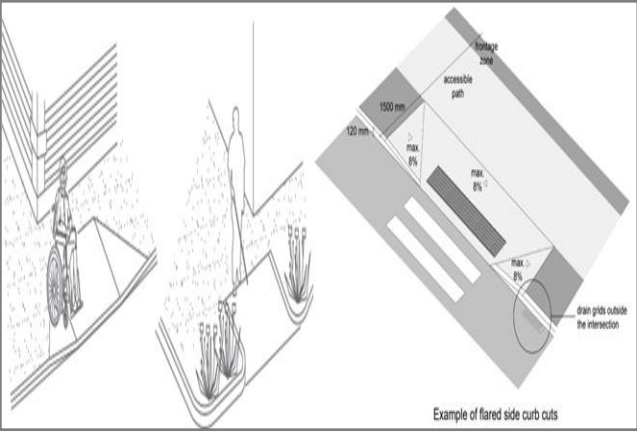

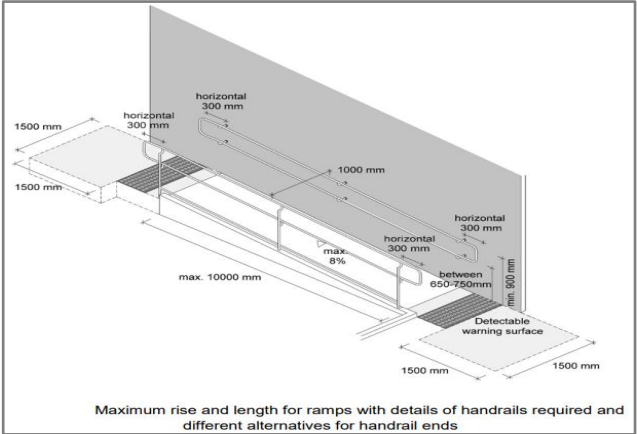

The World Disability Union (WDU) was established in 2011 as an inclusive umbrella organization for 400 sub-organizations from 91 countries with the status of International Qualified Entities. Within the scope of the Convention on the Rights of Persons with Disabilities guaranteed by countries; Disability prevention; Overcoming the disability; within the framework of the WDU Implementation Projects it developed for the inclusion of people with disabilities into the society, it aims at sustainable corporate work and unity with all relevant and competent parties.

We are the only institution that grants international certificates to places that are environmentally qualified for people with disabilities, whether governmental or private (airports, hotels, transportation, parks, museums, malls....)

The certificate of the WORLD DISABILITY UNION for the places eligible for people with disabilities in its three sections is an official recognition that this place is friendly for people with disabilities **In line with Article 9 of the U N Convention.**

The World disability union continues to evaluate many places eligible for people with disabilities in all countries, around the world, as the committees are working to follow up the audit.

Public Parks & Entertainment

No.	Conditions & Designs	Images
1.	<p>Car Parking</p>  <p>accessible parking places with lateral aisle</p>	
2.	<p>Car Parking Ramp</p>  <p>Example of flared side curb cuts</p>	
3.	<p>Entrance Ramp</p>  <p>Maximum rise and length for ramps with details of handrails required and different alternatives for handrail ends</p>	

4. Main Entrance



5. Interior Corridors



6. Recreation areas



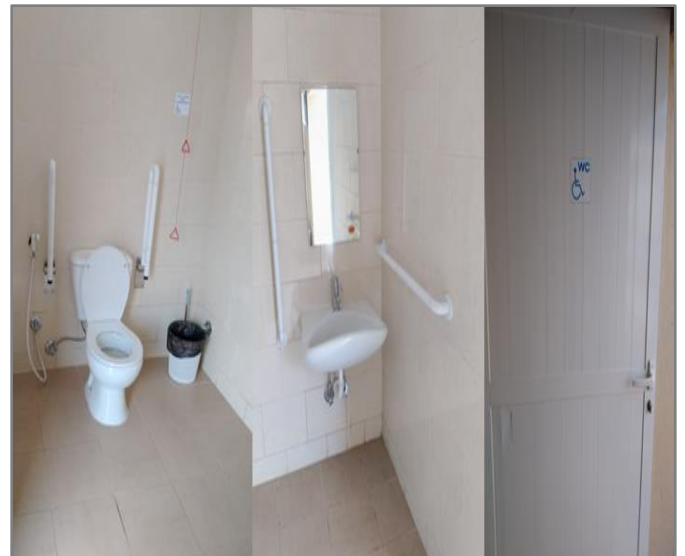
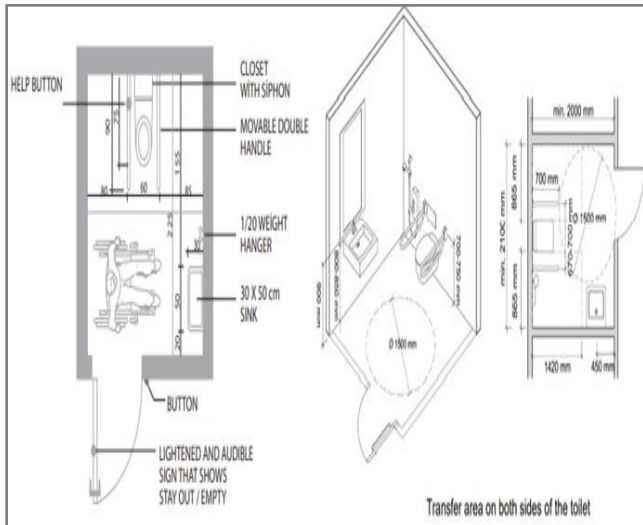
7. Places to sit



8. Barbecue areas



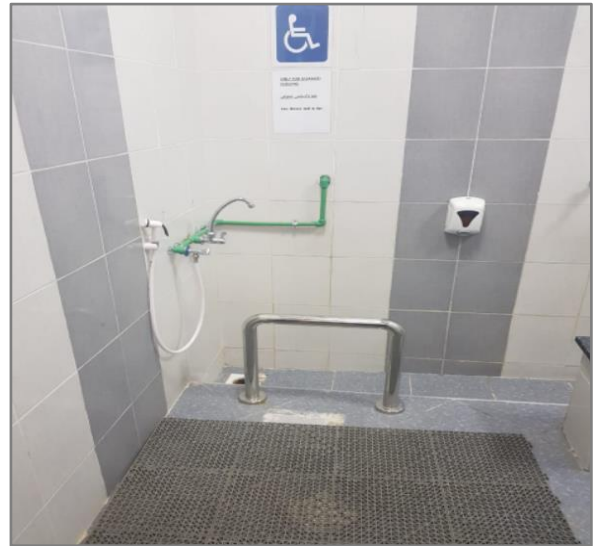
9. Bathrooms



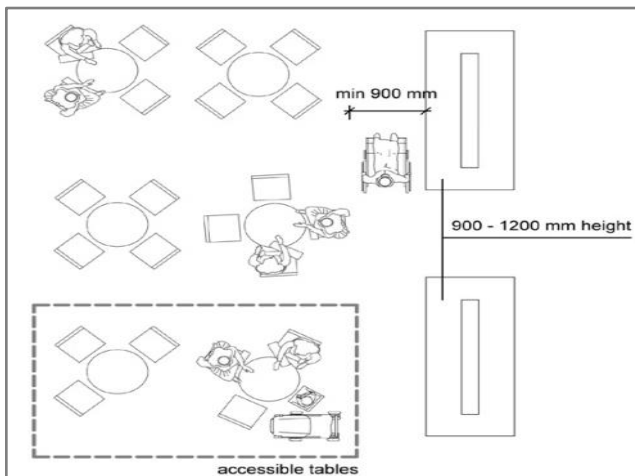
10. Prayer Room



11. Ablution Place



12. Restaurants suitable for wheelchairs



List of Standards for Public Parks and Entertainment Places

No.	Degree <hr style="width: 50%; margin: 0 auto;"/> Standards	1	2	3	4	5
1.	Car parking 10% (maximum 8 parking)					
2.	Parking ramps are 1m high by 10m long					
3.	Entrance ramp is 1m high by 10m long					
4.	Main entrance with a width of more than 120cm					
5.	Corridor with a width of at least 170cm for a length of more than 10m & a width of at least 100cm for a length of less than 10m					
6.	Bathrooms are equipped for people with <u>disabilities</u> <ul style="list-style-type: none"> • Width of the door: at least 100cm • The door opens out & closing automatically • Indoor bathroom space: not less than 150cm x 180cm • Sink height: 80 cm • Sink auxiliary devices height: 80cm – 85cm • Seat height: 40cm – 45cm • Seat auxiliary devices height: 60cm – 65cm • Auxiliary Equipment Dimension: Provide 35cm distance on both sides of the toilet chair from the middle of the chair • Clothes Hanger: 120cm – 130cm • Alarm bell (sound & light) 					
7.	Recreation areas					
8.	Places to sit					

9.	Barbecue areas					
10.	The prayer room					
11.	Ablution Place					
12.	Restaurants provide suitable space for wheelchairs					

* Total Point:

* The Ratio is calculated as follows: $\text{Total Point} / \text{Number of standards} \times 5 \times 100$

* The Ratio: