



The World Disability Union (WDU) was established in 2011 as an inclusive umbrella organization for 400 sub-organizations from 91 countries with the status of International Qualified Entities. Within the scope of the Convention on the Rights of Persons with Disabilities guaranteed by countries; Disability prevention; Overcoming the disability; within the framework of the WDU Implementation Projects it developed for the inclusion of people with disabilities into the society, it aims at sustainable corporate work and unity with all relevant and competent parties.

We are the only institution that grants international certificates to places that are environmentally qualified for people with disabilities, whether governmental or private (airports, hotels, transportation, parks, museums, malls....)

The certificate of the WORLD DISABILITY UNION for the places eligible for people with disabilities in its three sections is an official recognition that this place is friendly for people with disabilities **In line with Article 9 of the UN Convention.**

The World disability union continues to evaluate many places eligible for people with disabilities in all countries, around the world, as the committees are working to follow up the audit.

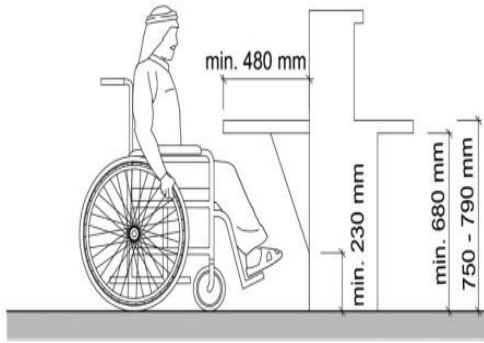
Ports and Airports

Developed countries provide at their airports and ports appropriate adjustments for person with disabilities, for the freedom of their travel and ensuring safety and security during their movement and facilities for their arrival quickly & less effort.

5 points allocated for each of the conditions necessary for obtaining the World Disability Union Certificate. An additional 5 points awarded for each additional added service not covered by these conditions:

No.	Conditions	design or photo
1.	<p>Car Parking (close, width, covered, number compared to total number of parking places, slope is close)</p>  <p style="text-align: center;">accessible parking places with lateral aisle</p>	
2.	<p>Slopes</p>  <p style="text-align: center;">Maximum rise and length for ramps with details of handrails required and different alternatives for handrail ends</p>	

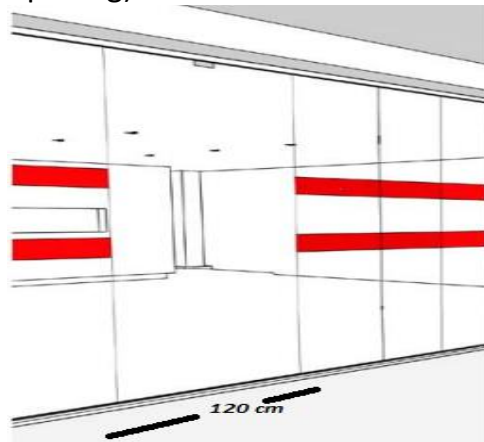
3. Reception (height of counter, sign language, braille & indicative lines for the blind)



Front desk dimensions



4. Entrance (door width & easy of opening)



5. Corridors

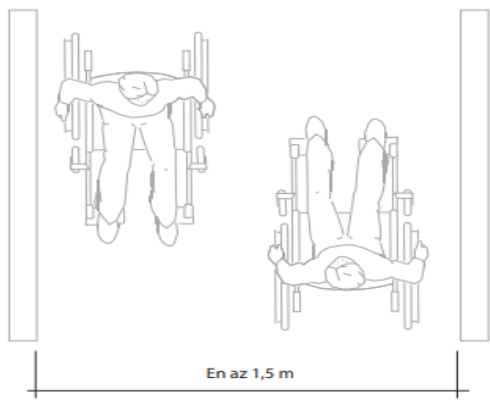


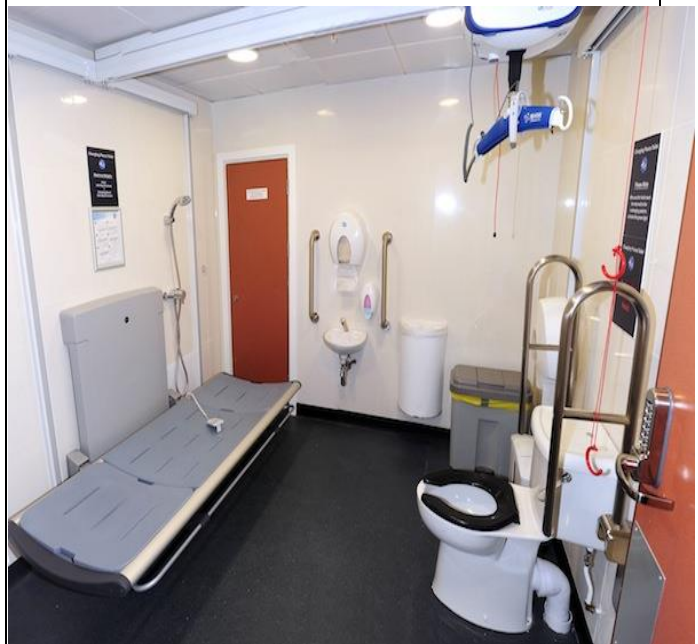
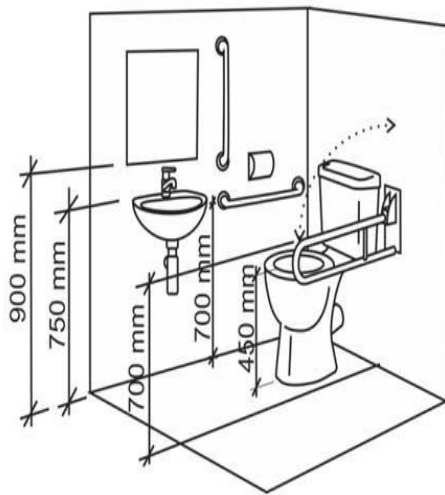
Image 93. Min net width for 2 wheelchairs passage



9. Having a platform for people with disabilities



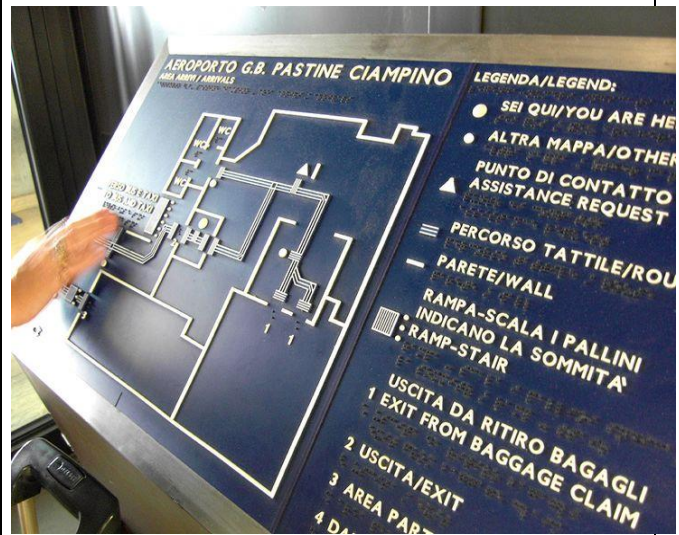
10. Bathrooms



11. The prayer room



12. Braille signboards



13. The availability of wheelchairs



14. Exemptions / discounts



List of Standards for Ports & Airports

No.	Degree <hr style="width: 50%; margin: auto;"/> Standards	1	2	3	4	5
1.	Parking 10% (maximum 8 parking)					
2.	The slopes are 1m high by 10m long					
3.	The height of the reception desks is a maximum of 100cm					
4.	Entrances with a width of more than 120cm					
5.	Corridor with a width of at least 170cm for a length of more than 10m & a width of at least 100cm for a length of less than 10m					
6.	<u>The Elevator</u> <ul style="list-style-type: none"> • Door width: not less than 100 cm • The internal space of the elevator: 180cm square • Time period for opening and closing the door: not less than 10 seconds • Button height: No more than 140cm • Voice & Braille 					
7.	The prayer room					
8.	Staff culture in dealing with people with disabilities (attending special courses dealing with people with disabilities + sign language courses)					
9.	Signboards in braille of appropriate height					
10.	The availability of assistive groups for the disable to reach the aircraft					
11.	Having a platform for people with disabilities					

12.	Bathrooms are equipped for people with <u>disabilities</u> <ul style="list-style-type: none"> ● Width of the door: at least 100cm ● The door opens out ● Indoor bathroom space: not less than 150cm x 180cm ● Sink height: 80 cm ● Height of toilet seat: 40cm – 45cm ● Height of the auxiliary devices: 60cm – 65cm ● Auxiliary Equipment Dimension: Provide 35cm distance on both sides of the toilet chair from the middle of the chair 					
13.	The availability of wheelchairs sufficient number for the disabled & the elderly					
14.	Exemptions / discounts for people with disabilities					
15.						
16.						

* Total Point:

* The Ratio is calculated as follows: $(\text{Total Point} / \text{Number of standards} \times 5) \times 100$

* The Ratio: