

Hotels and Resorts

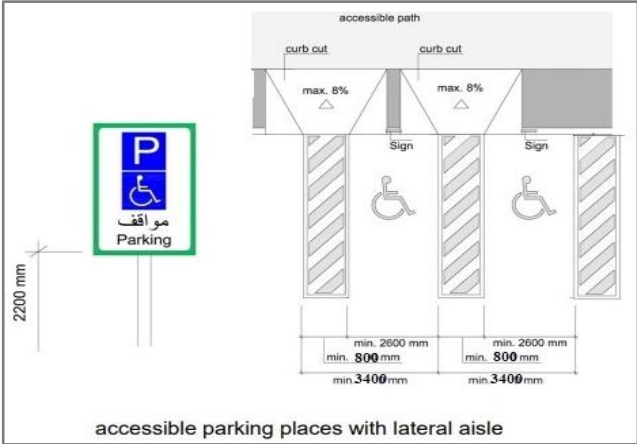

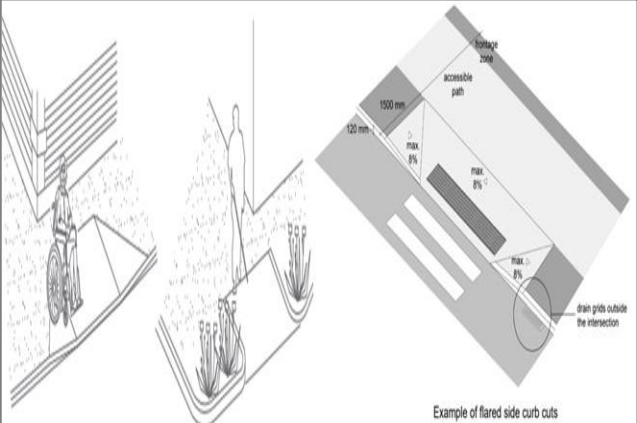

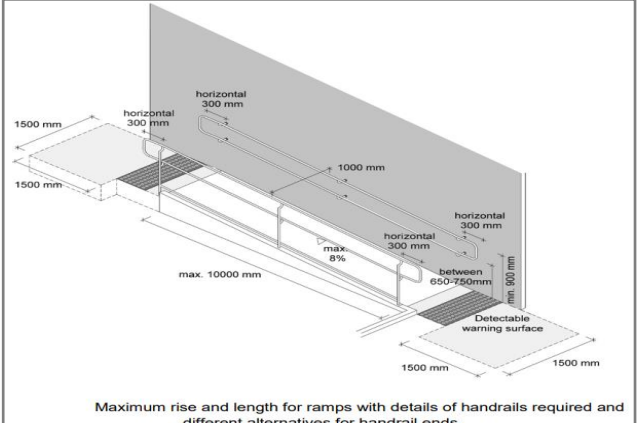

The World Disability Union (WDU) was established in 2011 as an inclusive umbrella organization for 400 sub-organizations from 91 countries with the status of International Qualified Entities. Within the scope of the Convention on the Rights of Persons with Disabilities guaranteed by countries; Disability prevention; Overcoming the disability; within the framework of the WDU Implementation Projects it developed for the inclusion of people with disabilities into the society, it aims at sustainable corporate work and unity with all relevant and competent parties.

We are the only institution that grants international certificates to places that are environmentally qualified for people with disabilities, whether governmental or private (airports, hotels, transportation, parks, museums, malls....)

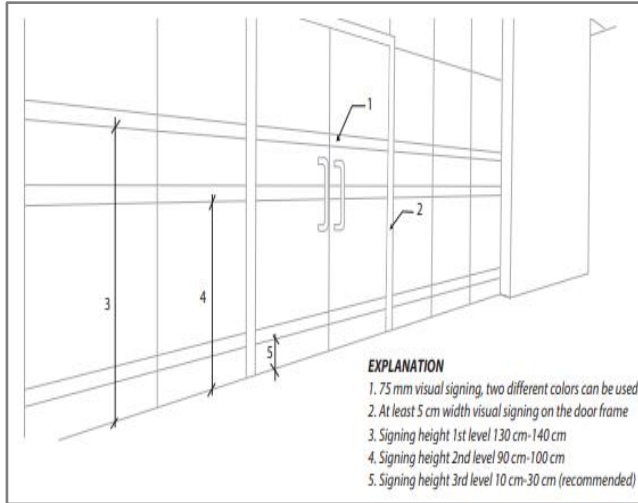
The certificate of the WORLD DISABILITY UNION for the places eligible for people with disabilities in its three sections is an official recognition that this place is friendly for people with disabilities **In line with Article 9 of the U N Convention.**

The World disability union continues to evaluate many places eligible for people with disabilities in all countries, around the world, as the committees are working to follow up the audit.

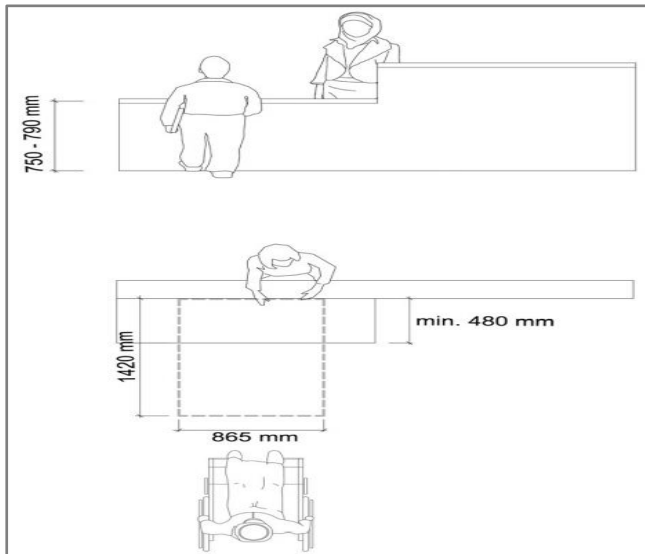
Hotels and Resorts

No.	Conditions & Designs	Images
1.	<p>Car Parking</p>  <p style="text-align: center;">accessible parking places with lateral aisle</p>	
2.	<p>Car Parking Ramp</p>  <p style="text-align: center;">Example of flared side curb cuts</p>	
3.	<p>Entrance Ramp</p>  <p style="text-align: center;">Maximum rise and length for ramps with details of handrails required and different alternatives for handrail ends</p>	

4. Main Entrance



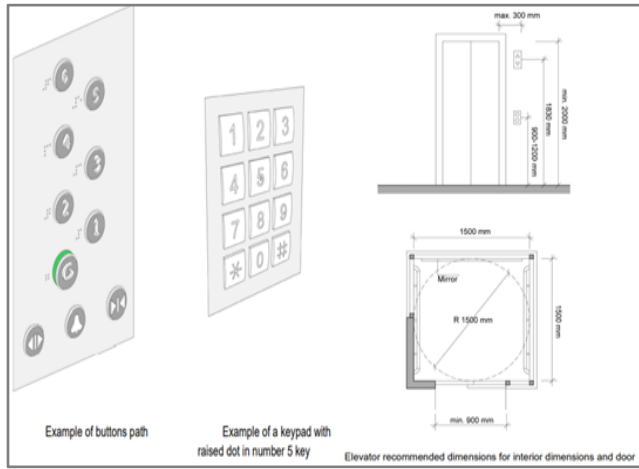
5. Reception with availability of wheelchair



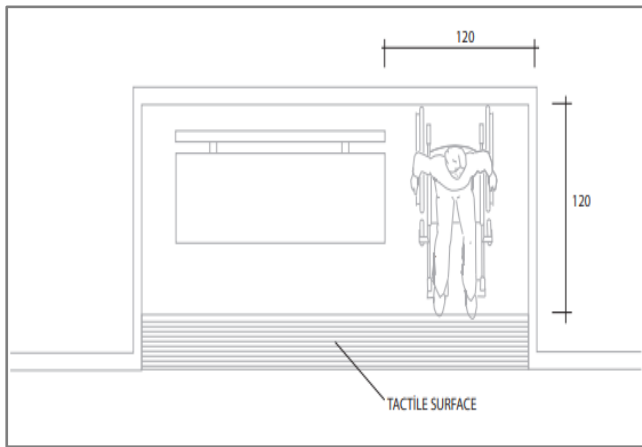
6. Corridors



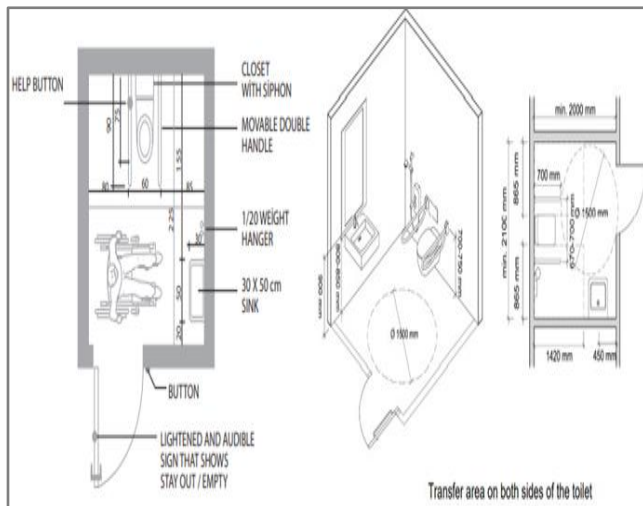
7. Elevator accessible for disabilities



8. Waiting area



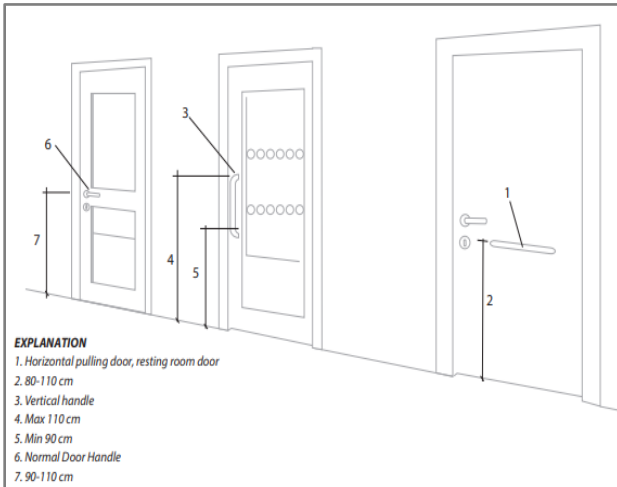
9. Lobby Bathroom



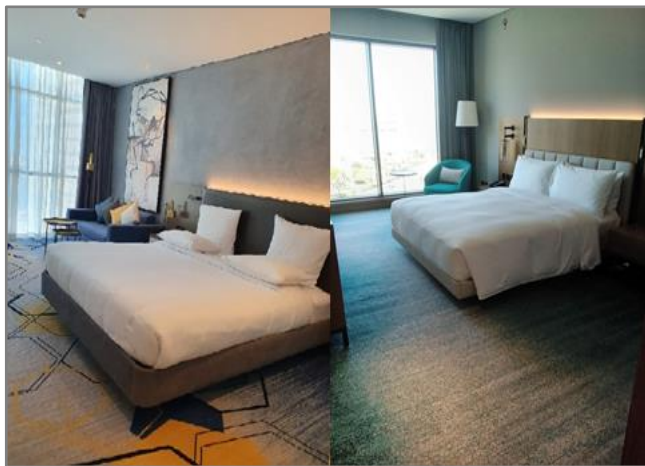
10. Restaurants



11. Room Doors



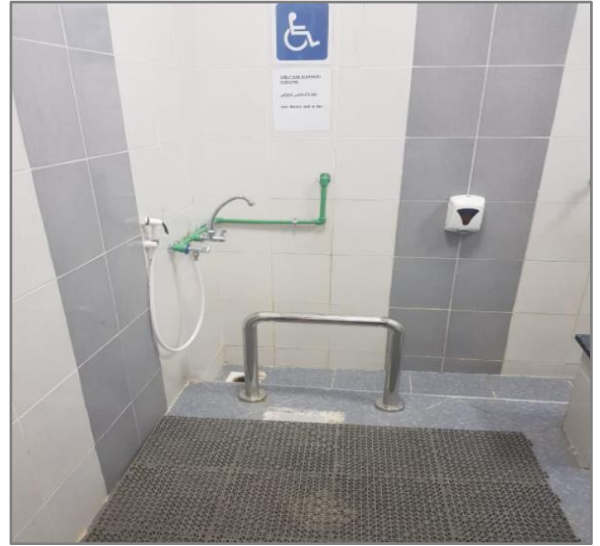
12. Rooms equipped for disabled along with bathroom



13. Prayer Room



14. Ablution Place



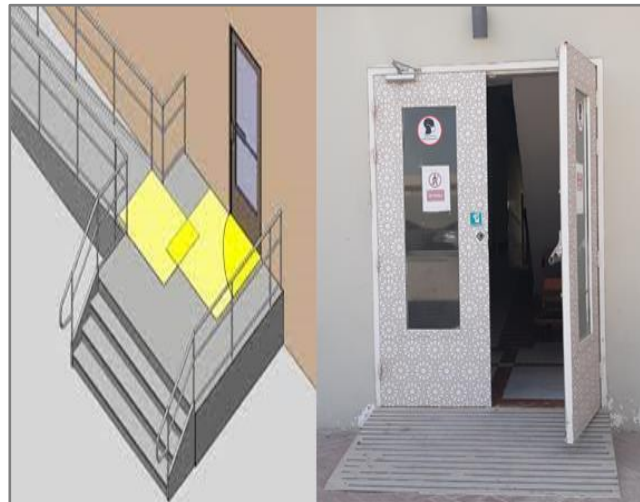
15. Swimming Pool



16. GYM



17. Emergency Exit with ramp



18. Fire Extinguisher



Alarm Bell (sound & light)



List of Standards for Hotels and Resorts

No.	Degree <hr style="width: 50%; margin: 0 auto;"/> Standards	1	2	3	4	5
1.	Parking 10% (maximum 8 parking)					
2.	Parking ramps are 1m high by 10m long					
3.	Entrance ramp is 1m high by 10m long					
4.	Main entrance with a width of more than 120cm					
5.	The height of the reception desks is maximum of 100cm, with the availability of sign language & wheelchair					
6.	Corridor with a width of at least 170cm for a length of more than 10m & a width of at least 100cm for a length of less than 10m					
7.	<u>The Elevator</u> <ul style="list-style-type: none"> • Door width: not less than 100 cm • The internal space of the elevator: 180cm square • Time period for opening and closing the door: not less than 10 seconds • Button height: No more than 140cm • Barriers on two sides of the elevator minimum • Voice & Braille 					
8.	Waiting area					
9.	Room doors with 90cm width minimum					
10.	Rooms equipped for the disabled					
11.	The prayer room					
12.	Ablution Place					
13.	Swimming Pool					

14.	GYM					
15.	Emergency Exit with ramp from outside					
16.	Fire Extinguisher, Alarm Bell (sound & light)					
17.	Restaurants					
18.	<p>Bathrooms are equipped for people with disabilities</p> <ul style="list-style-type: none"> • Width of the door: at least 100cm • The door opens out & closing automatically • Indoor bathroom space: not less than 150cm x 180cm • Sink height: 80 cm • Sink auxiliary devices height: 80cm – 85cm • Seat height: 40cm – 45cm • Seat auxiliary devices height: 60cm – 65cm • Auxiliary Equipment Dimension: Provide 35cm distance on both sides of the toilet chair from the middle of the chair • Clothes Hanger: 120cm – 130cm • Alarm bell (sound & light) 					
19.	Staff culture in dealing with people with disabilities (attending special courses dealing with people with disabilities)					

* Total Point:

* The Ratio is calculated as follows: $\text{Total Point} / \text{Number of standards} \times 5 \times 100$

* The Ratio: